



## SETOUCHI HARBOR TOWN MAP

How about going for a walk to the harbor area from the Marunouchi area, which once prospered as a castle town. We'll introduce you to our much-valued places, from new spots to well-established ones, loved by local people for a long time, where you can experience people, articles, and things with which you will be familiarized with Takamatsu City.

### OTHER SPOTS



**Hidamari Apartment**  
536-1 Kanko-cho, Takamatsu, Kagawa Prefecture

The talk of the town with popular shops such as Japanese shaved ice, bakeries, cafes, and pastry shops.



-Japan's three major bodies of water- Historical Takamatsu, Castle ruins

**Tamamo Park**  
2-1 Tamamo-cho, Takamatsu, Kagawa Prefecture  
+81(0)87-851-1521  
Opening Hours: Different according to the season  
Closed: 12/29-31  
Admission: Adults (16+) 200yen, Children (6-15) 100yen  
<http://www.takamatsujyo.com>



**George Nakashima Memorial Gallery**  
Kagawa Prefecture  
+81(0)87-870-1020

1132-1 Murecho-omachi, Takamatsu, Kagawa Prefecture  
+81(0)87-870-1020  
Opening Hours: 10:00AM - 5:00PM  
Closed: Sundays, National Holidays, New Year's Holiday, Summer Holiday  
Admission: Adults 500yen, Elementary and Junior High School Students 200yen  
<https://www.sakurashop.co.jp>



**RENOWA YASHIMA Project**  
2453-20 Yashimanishi-machi, Takamatsu, Kagawa Prefecture

A fun-packed, corporate project turns renovated apartments into cafes, bakeries, merchandise shops, hair salons and more.



Special places of scenic beauty  
**Ritsurin Park**  
11-20 Ritsurin-cho, Takamatsu, Kagawa Prefecture  
+81(0)87-853-7411  
Opening Hours: Different according to the season  
Closed: Open seven days a week  
Admission: Adults 410yen, Children 170yen  
<https://www.my-kagawa.jp/ritsuringarden>



**Isamu Noguchi Garden Museum**  
3519 Murecho-mure, Takamatsu, Kagawa Prefecture  
+81(0)87-870-1500  
<http://www.isamunoguchi.or.jp>

**Shikoku Village**  
91 Yashima-nakamachi, Takamatsu, Kagawa Prefecture  
+81(0)87-843-3111  
<http://www.shikokumura.or.jp>



**1 umie**  
Kitahama alley, 3-2 Kitahama-cho, Takamatsu, Kagawa Prefecture  
+81(0)87-811-7455  
Open 11:00AM - 11:00PM, Saturdays 10:00AM - 11:00PM, Sundays & Holidays 10:00AM - 9:00PM  
Closed on Wednesdays  
A café with culture in a renovated port warehouse. Looking out the window to the port's scenery, enjoying a lovely, peaceful time in my favorite café.



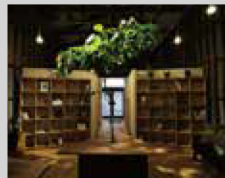
**2 kitahama blue stories**  
4-10 Kitahama, Takamatsu, Kagawa Prefecture  
+81(0)87-813-0204  
Opening in December, 2017  
A select shop in which the locally flourishing storywriters and producers portray the lifestyles of the Setouchi region together with the owner of the shop. They carry an abundant variety of mts, masking tape.



**4 Kounomono Dokoro Omoriya Store**  
10-3 Hyogo-machi, Takamatsu, Kagawa Prefecture  
+81(0)87-851-7913  
10:00AM - 7:00PM / Irregular Closings  
Selling over 300 kinds of selected specialty products such as tsukemono (pickles), tsukidani (food boiled in soy sauce), and the well-known Sanuki soy sauce beans. A long standing tsukemono specialty shop with a sense for all Japanese.



**7 Machino Shule 963**  
East bldg. 2F, Sanbajari, Marugame-machi, Takamatsu, Kagawa Prefecture  
+81(0)87-800-7888  
Store 11:00AM - 7:30PM, Café 11:30AM - 6:00PM, Fri. - Sun. 11:30AM - 10:00PM / Closed on the 3rd Monday each month  
A popular spot that tickles the fashionable mind with nice items and cafes for easy living. Watch for original items.



**3 Kutsuwa-do Sohonten**  
1-2 Katahara-machi, Takamatsu, Kagawa Prefecture  
+81(0)87-821-3231  
9:00AM - 8:00PM / 1F Open seven days a week, 2F Closed on Mondays  
A long-established Japanese confectionery store founded in 1877. Enjoy breakfast, parfaits and cakes at the 2F café. Buy the famous Kawara Senbei rice crackers for your souvenirs.



**5 Sanuki Industrial Crafts Center Sun Quelaque**  
1F 9-2 Katahara-machi, Takamatsu, Kagawa Prefecture  
+81(0)87-887-8140  
11:00AM-7:00PM / Closed on Wednesday  
A shop with great Sanuki products including traditional crafts and souvenirs. Experience the lifestyle and climate of things rooted here in Kagawa Prefecture.



**8 GRAPH work store**  
Akane bldg. 1F 7-15 Daiku-machi, Takamatsu, Kagawa Prefecture  
+81(0)80-3110-9387  
12:00PM - 7:00PM / Wednesdays and Thursdays  
Developing original bags reusing sails of yachts and hang gliders. Prying on those with fashionable minds with this one and only unique item.



**11 Wa DASHI An Hananosho**  
4-1 Minamishin-machi, Takamatsu, Kagawa Prefecture  
+81(0)87-831-3307  
11:00AM - 5:00pm / Open seven days a week  
A Wadashi café attached to a well-established, dry-fish specialty store. We want you to enjoy the great taste of authentic broth blends such as dried bonito flakes, sardines, and kelp.



**12 Ototo Senbei Kisyamotozo**  
5-8 Tamachi, Takamatsu, Kagawa Prefecture  
+81(0)87-861-2530  
10:30 AM - 5:30 PM / Closed on Mondays  
The "Ototo Senbei" rice cracker is carefully baked with original flavors of small fish from the Seto Inland Sea. Carrying the fragrance of sea, it is an exquisite senbei rice cracker.



**6 Mingei Fukuda**  
9-7 Hyakken-machi, Takamatsu, Kagawa Prefecture  
+81(0)87-821-3237  
10:00AM - 5:30PM / Closed on Mondays  
"Tools for living" such as pottery, baskets, and papier-mâché are available. An inviting rustic feel that gives you the once in a lifetime chance to find wonderful items.



**9 Haku**  
Akane bldg. 1F south end, 7-15 Daiku-machi, Takamatsu, Kagawa Prefecture  
+81(0)50-8805-8989  
12:00PM - 6:00PM / Tuesdays, Thursdays and Sundays  
"Connecting travel to people and things" is the theme of the owner's selection of shining goods. Ideal for picking out gifts.



**10 Coffee, Books, and Music Nakazora**  
Kitahara bldg. 2F 1-10-18 Kawara-machi, Takamatsu, Kagawa Prefecture  
+81(0)87-861-3070  
1:00PM - 3:00AM / Closed Sundays  
The oasis in town where you can enjoy late night coffee until 3am. Books, music, coffee... An adult café that wants to keep digging deep for that original style.

Map Guide: Mina Yamaji  
Freelance writer and resident in Kagawa prefecture. A free spirit, wandering around the prefecture, cherishing her encounters with extreme things, events and people to express them into words.